

Equipment Highlights

- 1200 Watt power
- 3 temperature levels including cooling level
- Ceramic coating
- 360° rotatable cable
- Narrow dimensions
- Brush head with 260 bristles
- Dust filter at air inlet
- Quieter than conventional hairdryers



Be Cool One-Step 4in1 Hot Air Brush (DRY, STRAIGHTEN, STYLE & BRUSH)

The Be Cool One-Step 4in1 hot air brush is suitable for all hair types (and hair extensions).

The Negative Ion Styling Technology eliminates frizz, static, and split ends. The heating process produces a lot of negative ions, which can reduce damage to the hair root and make the hair shinier and smoother.

The 360 ° air diffuser and the high-quality ceramic coating provide better air and heat coverage and ensure better heat distribution and faster drying.

Shorten the drying time by half and save valuable time!

The two massage balls of different lengths provide more space between the hairs. Your hair becomes soft, smooth, elegant and shiny.

The lightweight ergonomic design and the 360 ° rotating cable provide maximum comfort and ease of use. Avoid heat damage and care for your hair with the Be Cool One Step 4in1 hot air brush.

Negative Ion Styling Hair Dryer

The heating process produces a lot of negative ions, which can reduce damage to the stratum corneum of the hair and make the hair shinier and smoother.

Curling & Straightening

Two massage balls of different lengths provide more space between the hairs and accelerate drying. Roll up to create curls and comb straight down to straighten hair.

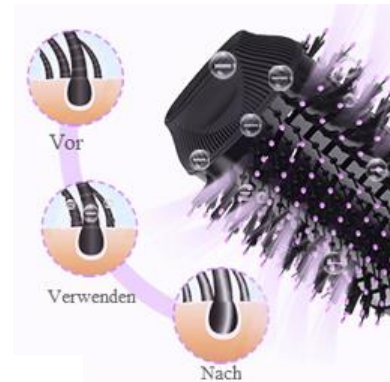
Unique Ventilation Holes

The 360° air diffuser provides better air and heat coverage for better heat distribution and faster drying. Straighten your hair easily and make your hair shiny and light.



Negative Ion Styling Hair Dryer

The heating process produces a lot of negative ions, which can reduce damage to the stratum corneum of the hair and make the hair shinier and smoother.



Unique Ventilation Holes

The 360° air diffuser provides better air and heat coverage for better heat distribution and faster drying. Straighten your hair easily and make your hair shiny and light.

Curling & Straightening

Two massage balls of different lengths provide more space between the hairs and accelerate drying. Roll up to create curls and comb straight down to straighten hair.



The 360° rotatable cable

360° rotating design cord prevents snagging and pulling, the cord does not twist, and you can style your hair more comfortably at any angle.

Technical Data

- 1200 Watt Leistung
- Input voltage: 220 - 240 V
- Frequency: 50 Hz
- 3 temperature levels including cooling level
- High Power Turbine
- Rotatable cable
- Narrow dimensions
- Brush head with 260 bristles
- Dust filter at air inlet
- Thermally insulated top side
- Quieter than conventional hairdryers
- Dimensions - (height x width x depth): 380 mm x 110 mm x 90 mm
- Power cord: 170 cm
- Handle diameter: 3-6 cm
- Weight: 0,69 kg
- Internal item number: BCOSWB2018
- Color: Black / Cyan
- EAN: 9005151000214

Warranty Period

- 2 years

