

**Equipment Highlights**

**LED Display**

Easy-to-read and bright LED display with minimal power consumption.

**Saver**

The additional function enables energy savings due to lower power consumption.

**Timer**

12 / 24 hrs mode. Switching on and off after the desired time.

**Dehumidification**

Ideal for dehumidification, without temperature difference.

**R32 Refrigerant**

Is more environmentally friendly and energy-saving than some other refrigerants.

**Quiet**

The volume level can be reduced by fan speed or sleep mode.

**Auto Restart**

After switching off or a power failure, the selected program continues.



QUICK CONNECTOR



**Cooling capacity: 18,000 BTU**  
**max.160m3 - max.64m2 at 2.5 meters room height**

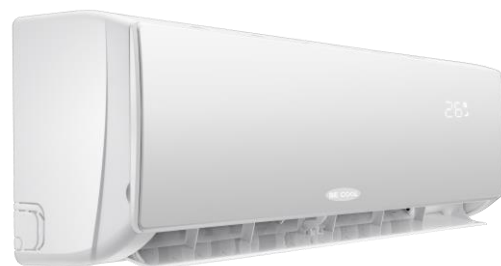
Whether cooling, heating or dehumidifying an air conditioner is always a worthwhile investment for our well-being. Especially in the dormitories, air conditioners are in high demand because there should be a feel-good climate in order to start the new day as rested as possible. A physical well-being increases our performance. Decisive for our well-being is an optimally tempered and dehumidified living space. The dehumidification function in particular is particularly noticeable even at the same temperature. For example, an air-conditioned room with 26°C differs significantly from a non-air-conditioned room air with sultry indoor air. Roof buildings and attic apartments can reach unpleasant temperatures as early as spring. Getting the heat off again in a short time often proves to be very difficult. With an air conditioning system from BE COOL you can solve this problem and can look forward to an improved indoor climate of tomorrow.



## Heat pump principle

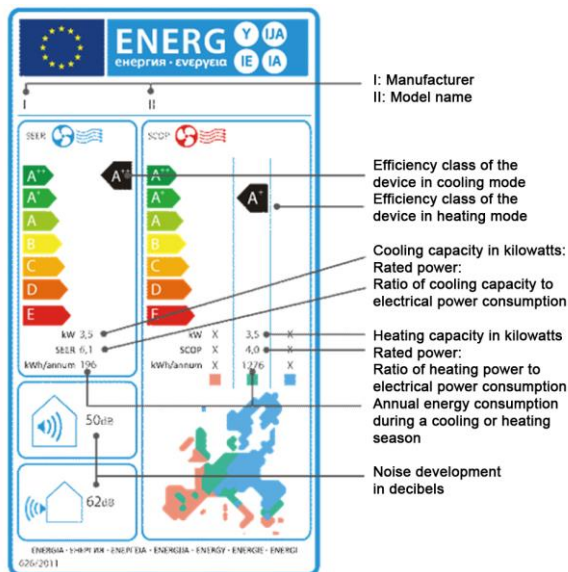
This comfortable and energy-saving air conditioning is also known as air-to-air heat pump. There is a lot of unused energy hidden in the air. BE COOL devices pick up the energy and process it. Invest in a free energy source today and benefit from the vitalizing effect of a perfectly air-conditioned and dehumidified living or business space.

## Technical data



### Commissioning

Full package with copper cables. For operation you only need a 230V household voltage.



- Cooling capacity: 18000 BTU
- Coolant: R32
- SEER: 6.1 W/W
- SCOP: 4.0 W/W
- Cooling capacity: max. 5100 watts
- Heating capacity: max. 5130 watts
- Energy class: A+
- Indoor air circulation: 800m<sup>3</sup>/h
- Indoor sound power: 36-53dB (A)
- External sound power: 65dB (A)
- Internal sound pressure: 27-43dB (A)
- External sound pressure: 55dB (A)
- Power Supply: 220-240V
- Cooling: 1,7 ~ 12,0 A Heating: 1,7 ~ 13,0A
- Application: max. 160m<sup>3</sup> (\*64m<sup>2</sup>) \* at 2.5 m room height
- Dimensions of indoor unit: 910mm x 294mm x 206mm (W x H x D)
- Dimensions outside unit: 853mm x 602mm x 349mm (W x H x D)
- Weight indoor unit: 10kg
- Weight outdoor unit: 35kg
- EAN Indoor Unit: 9005151000511
- EAN Outdoor Unit: 9005151000474

## Package Content

- 1x Outdoor unit 18.000 BTU
- 1x indoor unit
- 1x 4m copper lines
- 1x vibration damper / Underlay plates
- 1x User Manual
- 1x Remote control

## Warranty period

2 years

**Note:** This device must be installed by a certified specialist company, according to Climate Change Regulation EU Regulation 517/2014 (Implementing Regulation No. 2015/2067). We would like to point out that the installation prices as well as the installation times may differ due to different regional specialist companies.



Scheringgasse 3  
1140 Vienna  
Phone +43 1 970 21-0  
Www.becool.at